

TIMOTHY YARGER
FINE ART
LOS ANGELES



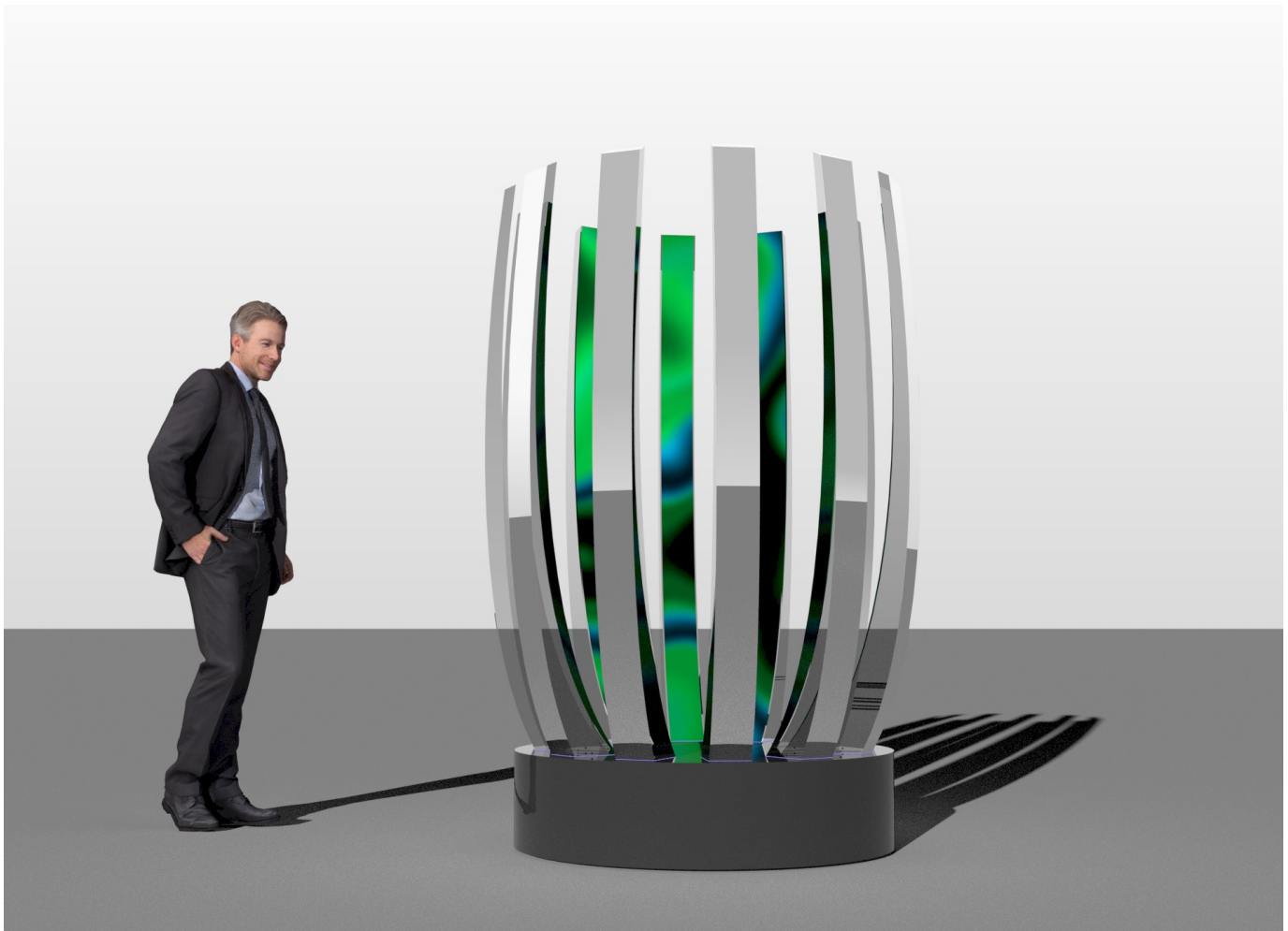
January 24 - 28, 2024

With great pride we will unveil at Art Palm Beach the monumental-scaled sculpture by Mads Christensen, titled ***Bloom***.

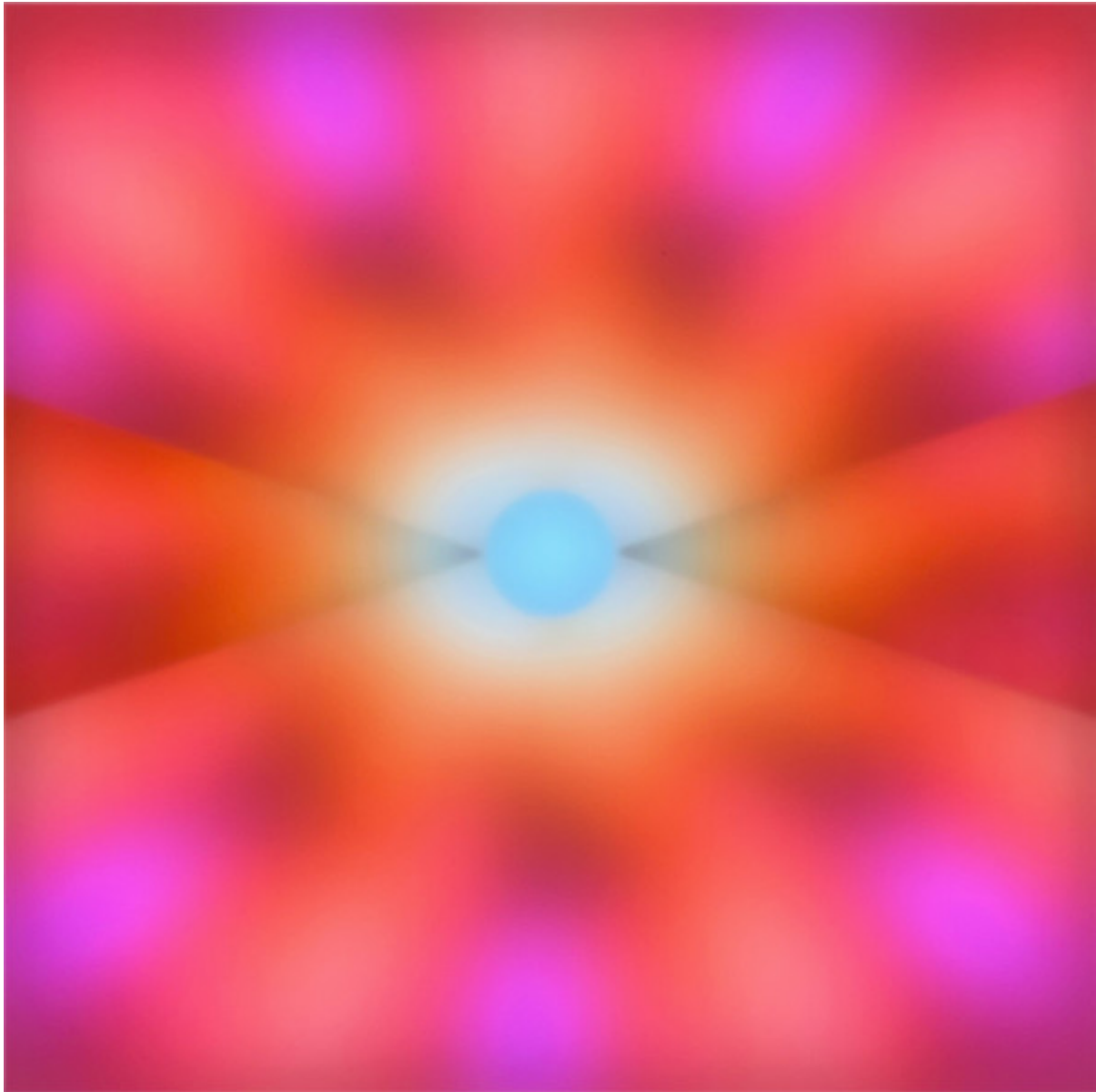
Bloom's physical presence and engaging composition seeks to capture the essence of perpetual growth in nature, the lifecycle of plants and trees, and the relentless pursuit of fullness and vitality.

The vibrant hues, dynamic digital brushstrokes and reflective surfaces suggest the unfolding stages of life, culminating in an exquisite bloom, a tribute to the cyclical beauty inherent in the natural world

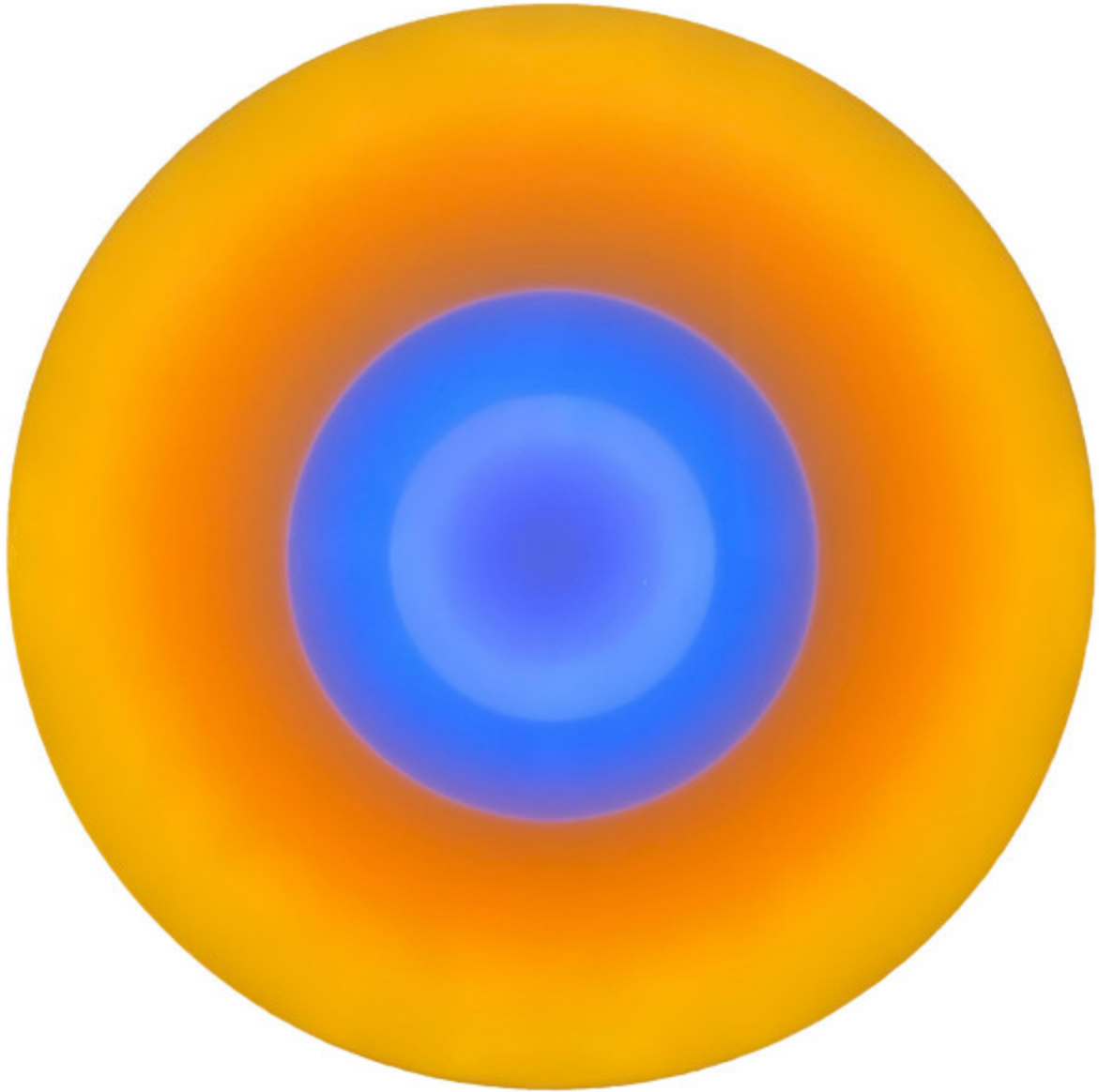
Bloom invites viewers to contemplate the harmonious dance of growth and renewal that defines the ever changing landscape of existence.



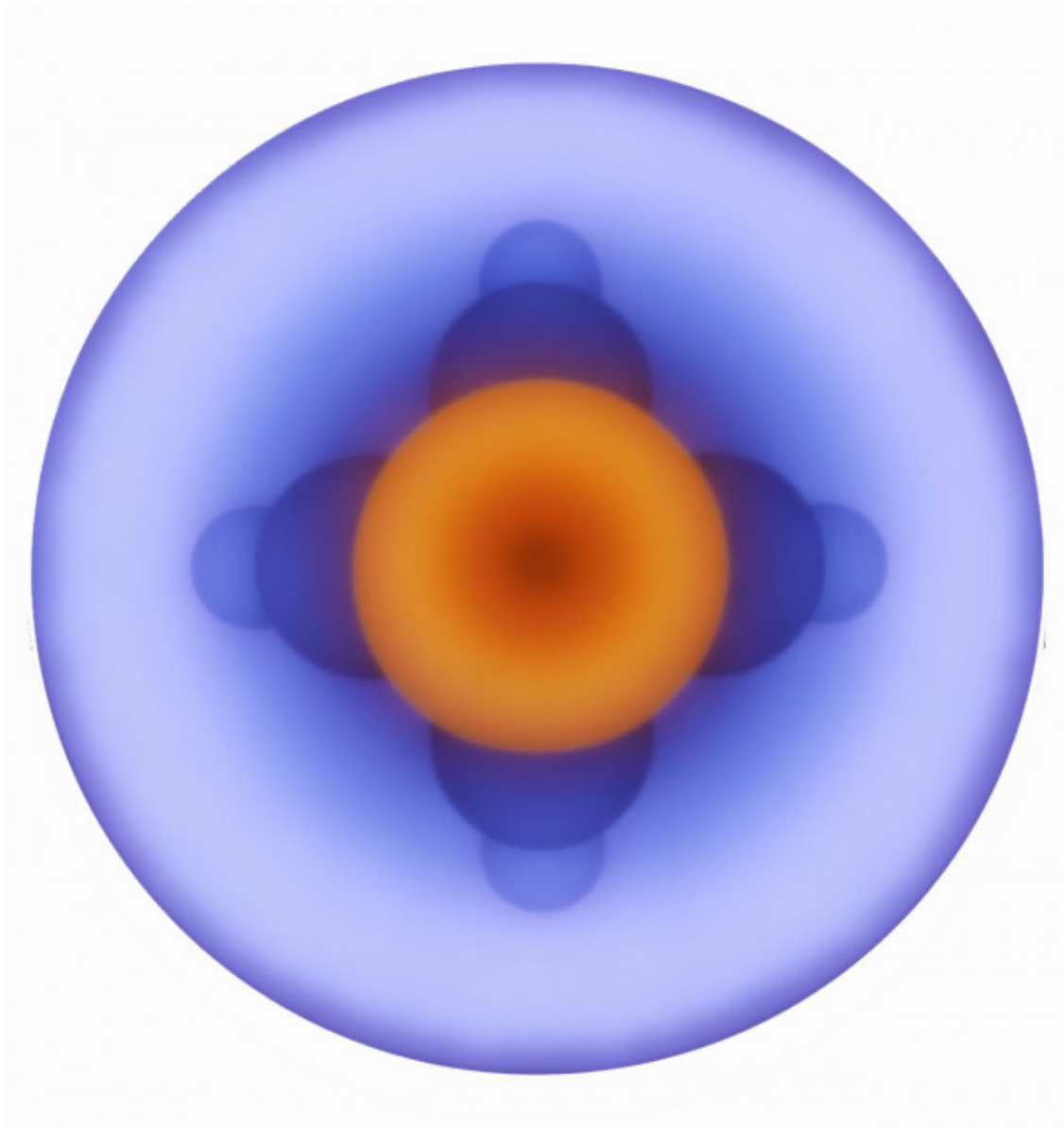
Mads Christensen
Bloom, 2024
Mixed-Media Sculpture LEDs, Acrylic, Custom Software
72 x 57 x 57 inches
\$115,000.00



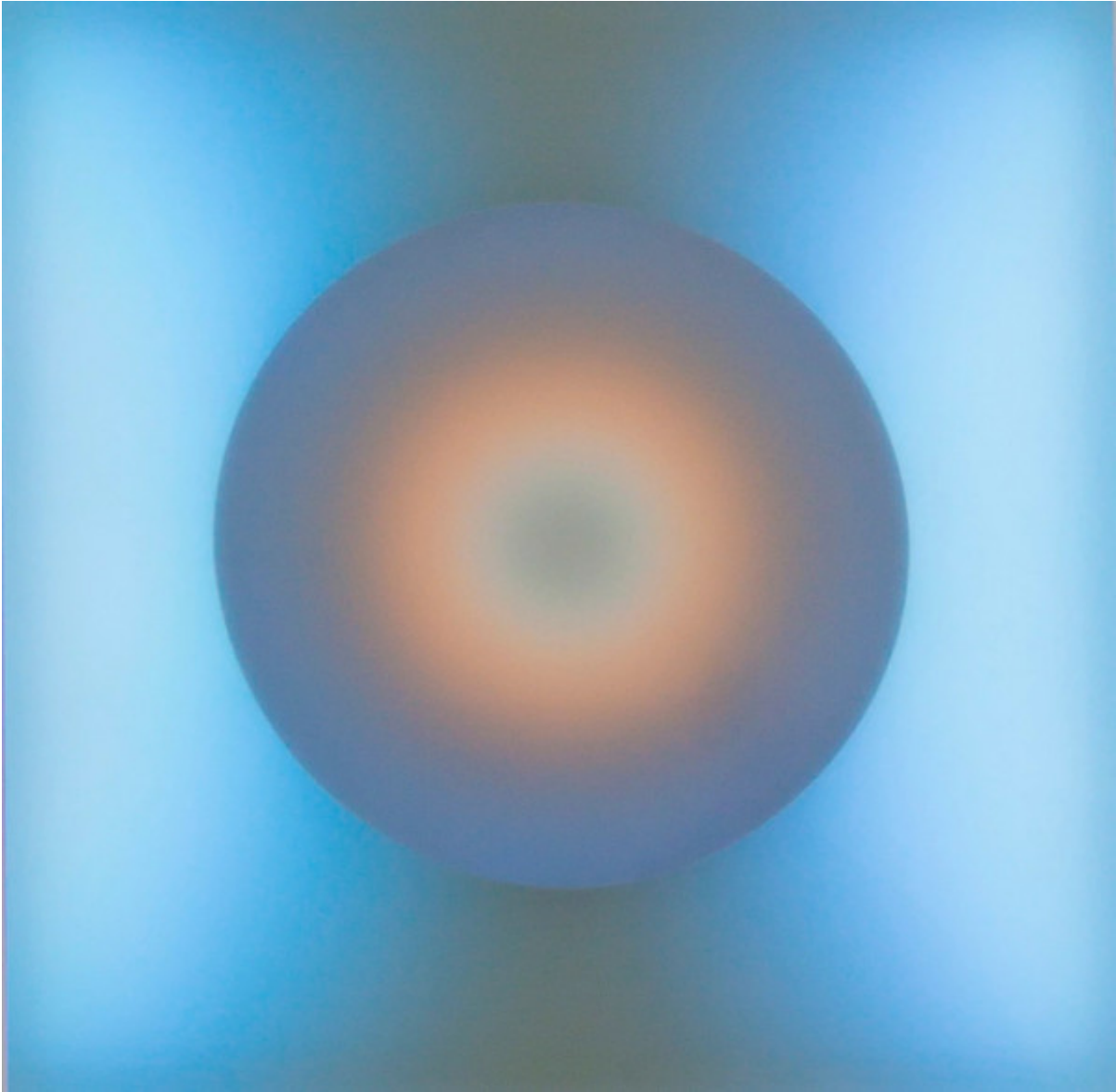
Mads Christensen
Convergence, 2023
Mixed-Media Sculpture LEDs, Acrylic, Custom Software
32 x 32 x 2.5 inches
\$21,500.00



Mads Christensen
Eye Drop, 2023
Mixed-Media Sculpture Acrylic, LEDs, custom software
48 x 48 x 2.5 inches
\$27,000.00



Mads Christensen
Good Vibrations, 2024
Mixed-Media Sculpture LEDs, Acrylic, Custom Software
54 x 54 x 2.5 inches
\$32,500.00



Mads Christensen
I/O, 2020
Mixed-Media Sculpture LEDs, Acrylic, Custom Software
32 x 32 x 2.5 inches
\$21,500.00

MADS CHRISTENSEN



Mads Christensen's dynamic light-based works explore how we as viewers respond to illumination and color through the neuro-receptors of the human visual analog system.

Following in the footsteps of ground breaking artists exploring this medium -- like James Turrell, Doug Wheeler, Dan Flavin, Ivan Navarro and Olafur Eliasson -- Christensen is interested in the manner by which our brain translates the sensory information gathered by the receptors in

the human eye into specific colors, and consequently the emotional experience.

Trained as an electrical engineer, Christensen's work is a fusion of his software designs and the intangible qualities of light as medium. While artists throughout history have been fascinated by depicting light, Christensen creates what appears as three-dimensional paintings with light. This platform is reminiscent of the flat and static shape of a painting but its animation and range of color creates a dialog with the space by illuminating the viewer and surrounding area with ambient light. The dramatic, stimulating and soothing qualities inherent in his work present an evolution of visual experience.

<https://www.yargerfinearts.com/madschristensen>



Minako Iwamura
Bocca, 2023
Oil Oil and white charcoal on cradled wood panel
40 x 30 x 1.5 inches
\$9,500.00



Minako Iwamura
Eighteen (18P), 2021
Oil Oil and white charcoal on cradled wood panels
10 x 8 inches
\$2,200.00



Minako Iwamura

Esse, 2023

Oil Oil and white charcoal on cradled wood panel

40 x 30 x 1.5 inches

\$9,500.00



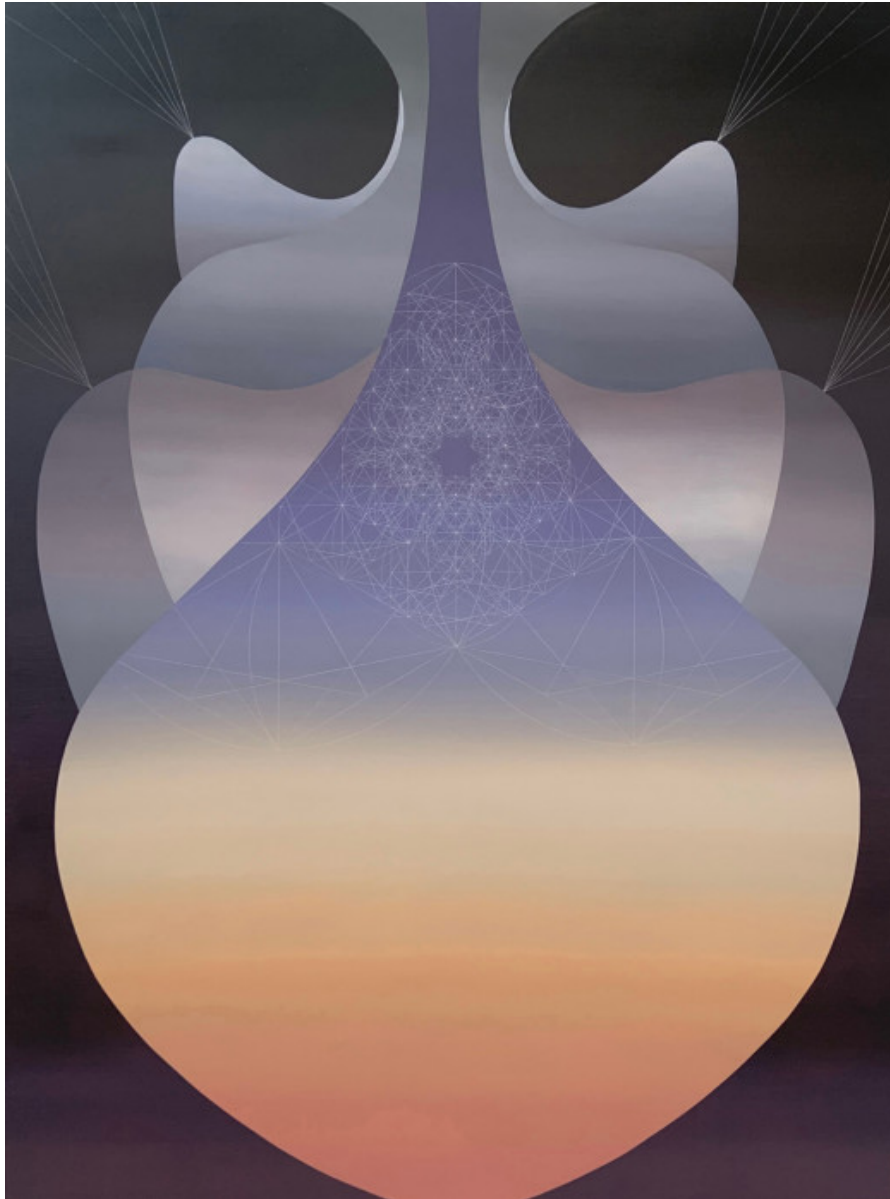
Minako Iwamura

Lake, 2023

Oil Oil and white charcoal on cradled wood panel

40 x 30 x 1.5 inches

\$9,500.00



Minako Iwamura
State of Being 5 (Peel), 2022
Oil Oil and white charcoal on cradled wood panel
40 x 30 x 2 inches
\$9,500.00



Minako Iwamura

Tear, 2023

Oil Oil and white charcoal on cradled wood panel

40 x 30 x 2 inches

\$9,500.00

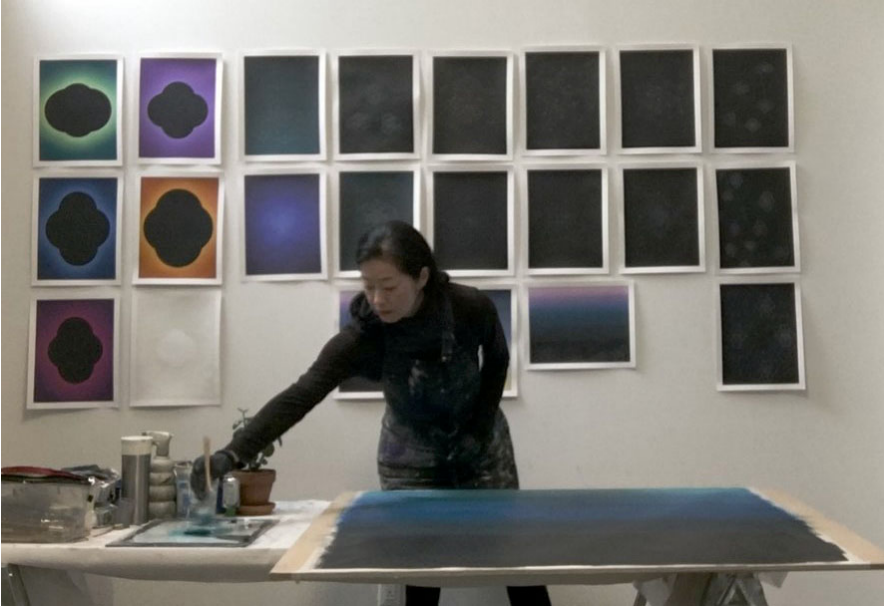


Minako Iwamura
Thirty Five (35), 2023
Oil Oil and white charcoal on cradled wood panel
10 x 8 inches
\$2,200.00



Minako Iwamura
Twenty Two (22), 2021
Oil Oil and white charcoal on cradled wood panel
10 x 8 inches
\$2,200.00

MINAKO IWAMURA



Born in Australia, raised and educated in Tokyo and in New York, Minako received her BFA from Rhode Island School of Design. She lives in Brooklyn and works in Ridgewood, NY.

Minako's work explores the interplay of geometry, patterns, and color, and their psychological undertones. Her work has varied from a series incorporating fractals in its pictorial structure and evoking elements in nature, to her more recent work introducing silhouettes of vessels that connote entities.

She is interested in dualities - the coexistence of geometry and nature, singular and the collective, premeditated delineation and intuitive movements, parameter and chaos, to name a few. Through these dualities, she portrays a particular state that hovers in a precarious spot of in-betweenness and its psychology.

<https://www.yargerfinearts.com/minako-iwamura>



Conrad Leach
Ferrari Berlinetta, 2023
Acrylic Acrylic on canvas
50 x 64 inches
\$17,500.00



Conrad Leach
Ferrari Lusso, 2023
Acrylic Acrylic on canvas
50 x 64 inches
\$17,500.00

CONRAD LEACH



Conrad Leach began his artistic career as a designer and development consultant for major fashion brands in Europe. Following 20 years of immersion in creative fields and the success of his first solo show of paintings in London.

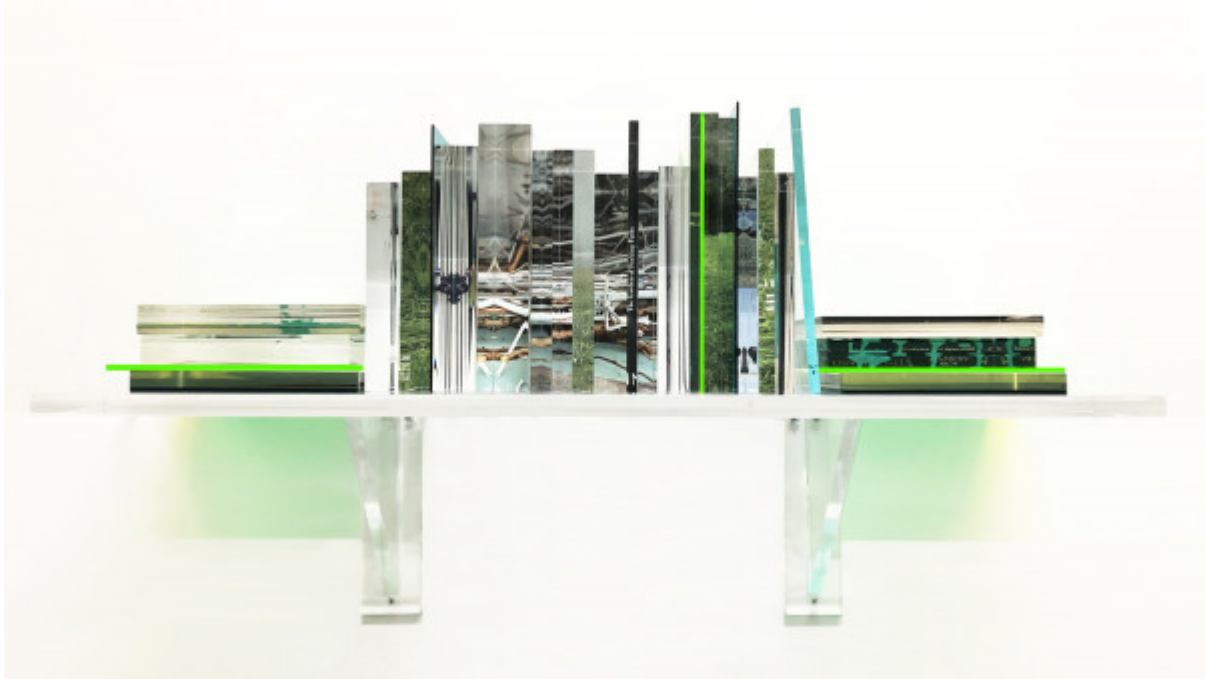
Conrad was selected as Artist in Residence for the Louis Vuitton CELUX project in Tokyo. While in Japan, Conrad pursued his fine art practice full time beginning in 2002, and developed the concept of 'Pop Ukiyo-e' which paved the way for a series of portraits of Japanese society

and large scale paintings for the Kamizono-cho residence in Yoyogi Park.

The history of painters moving to Los Angeles for its quality of light, creative environment and artistic freedom has a long and storied history. The trend has recently accelerated and for many good reasons.

Conrad relocated his studio from London to LA in 2014 which inspired a new body of work exploring his observations of life and the culture of Los Angeles.

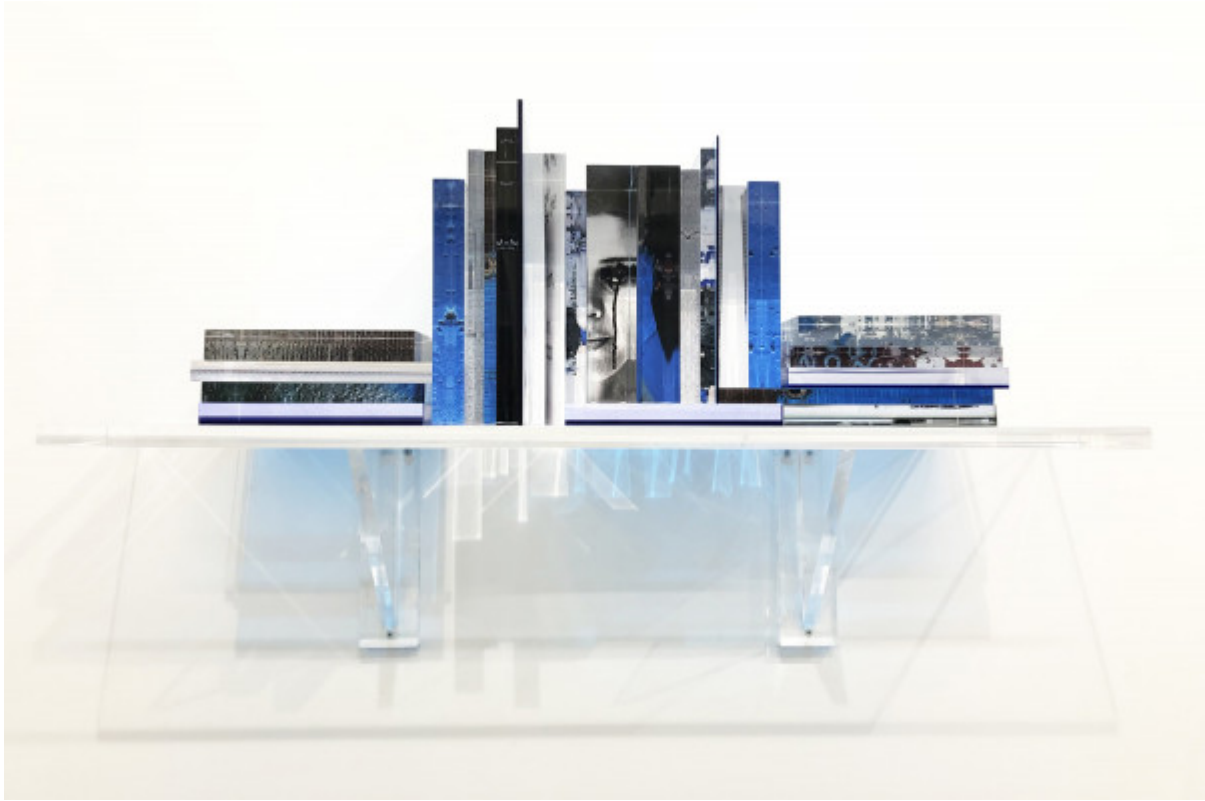
<https://www.yargerfinearts.com/conrad-leach>



Pancho Luna
Dream Forest, 2023
Mixed-Media Sculpture Mixed-media
24 x 48 x 10 inches
\$29,500.00



Pancho Luna
The Art of Forgiving II, 2023
Mixed-Media Sculpture Mixed-media
24 x 48 x 10 inches
\$29,500.00



Pancho Luna
Untitled (2301), 2023
Mixed-Media Sculpture Mixed-media
24 x 40 x 10 inches
\$27,500.00



Pancho Luna
Bouquet II, 2022
Mixed-Media Sculpture
13.5 x 14 x 15 inches
\$18,500.00

PANCHO LUNA



Pancho Luna's childhood in Argentina was spent in his grandmother's library, where volumes of books in multiple languages and subject matter informed his imaginative nature.

Before he could even read, Luna began to understand these books as objects in themselves—as a maze of color, texture, and form. This was the foundational experience that informed the artist's sculpture, practice and style.

Luna carries on the historic, modernist tradition of acrylic sculpture. He is recognized for transforming the material into polished books – molding acrylic blocks into beautiful texts. Each piece incorporates a binding with images and words that reflect the artist's consciousness and concerns. As the viewer moves around the piece, the hues and patterns shift and change as they reflect against one another. The shadows that are cast throughout the piece and onto the surrounding walls are as delightful as the objects themselves.

Luna divides his time between Buenos Aires and Miami. His work is engaged with the contemporary art dialogue and is actively collected because of its aesthetic beauty, purity of form and poetic composition.

<https://www.yargerfinearts.com/pancho-luna>

TIMOTHY YARGER FINE ART

Timothy Yarger entered the art business in 1982 and has been a Los Angeles based art dealer since 1986. After directing galleries in San Francisco, New York and Beverly Hills, Timothy Yarger Fine Art, Inc. was established in 1997. Timothy Yarger Fine Art has exclusive artist representation of contemporary artists in primary markets and secondary market expertise, which compliments its scholarship in historic material of the 20th Century. The gallery produces regular exhibition programming, alongside its services in assisting individuals in building and managing their collections.

Throughout the gallery's history, TYFA has had a particular interest in the Los Angeles based movement of Light and Space and has worked with James Turrell, Robert Irwin and Peter Alexander. Creating light in all techniques continues to inform our gallery roster and the next generation of artists such as Mads Christensen, Udo Noger, Conrad Leach, Pancho Luna and Shana Mabari.

TYFA promotes scholarship, broad connoisseurship, and public programming through collaboration with art historians, critics, and museum professionals, who contribute to the galleries' events and publications. TYFA is dedicated to advancing the careers of their artists while contributing to the contemporary art dialogue.

Timothy Yarger began mounting exhibitions internationally in 1995 and since 2002 has conducted more than 20 exhibitions on preeminent 20th Century artists, included Andy Warhol, Roy Lichtenstein, Pablo Picasso, David Hockney, Pierre-Auguste Renoir, Joan Miro, Marc Chagall, as well as selected group exhibitions of established contemporary artists. TYFA has provided exhibitions for other galleries in the United States, China, Southeast Asia and Europe.

www.yargertineart.com

(310) 278 - 4400

General Inquires
info@yargertineart.com